

WRL \$4 million Local Grants Fund now open






The **WRL Benefit Sharing Program** is a commitment to communities along the proposed route to share in the social and economic value created by the project.

As part of this, the **\$4 million Local Grants Fund** will support local initiatives that strengthen community participation, enhance environmental health, improve shared spaces and help communities prepare for a cleaner energy future. Funding will be delivered regardless of whether the WRL project proceeds.

Practical support, including free independently facilitated grant writing workshops, will be available throughout the application period. Applications will close at **11:59pm on Tuesday 30 June 2026**.

 <p>Grants up to \$50,000</p>	<p>are available for smaller-scale initiatives.</p>	 <p>Grants up to \$300,000</p>	<p>are available for larger-scale legacy projects.</p>
--	---	--	--

What are we funding?

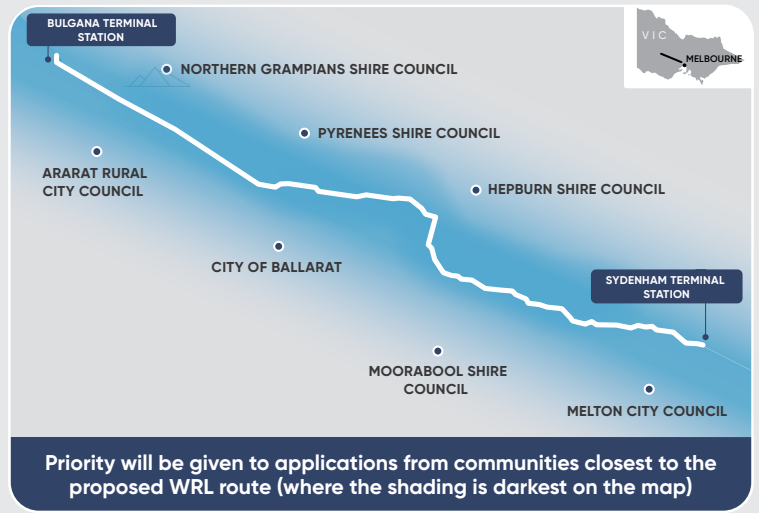
	<p>Community infrastructure</p> <p>Upgrades and improvements to public places to help build connected, resilient, healthy and inclusive communities</p>	<p>For example:</p> <p>New playgrounds, resurfaced sports grounds, community gardens, drinking fountains or picnic grounds in parks or creating places for people to gather</p>
	<p>Environment</p> <p>Nature conservation activities that support biodiversity and enhance habitats and water resources</p>	<p>For example:</p> <p>Tree planting, creating wildlife habitats or improving local wetlands and bushland</p>
	<p>New energy initiatives</p> <p>Support for community facilities that improve energy affordability, resilience and education</p>	<p>For example:</p> <p>Solar and battery systems, electric vehicle charging, energy resilience education programs or a community space adding backup power to support locals during an emergency</p>
	<p>Community connection and participation</p> <p>Initiatives that bring people together, improve inclusion and support participation</p>	<p>For example:</p> <p>Participation, inclusion and accessibility programs, materials for creative or cultural programs, or simple essentials like marquees and BBQs for community events or to support fundraising activities</p>
	<p>Emergency services</p> <p>Support to encourage and train volunteers and help purchase equipment to assist with service delivery</p>	<p>For example:</p> <p>Training, essential gear or equipment that helps volunteers respond to fires, floods, storms or droughts and the people, animals or infrastructure impacted by them</p>

The examples provided in this flyer are intended as a guide only. Please refer to the program guidelines on our website for detailed eligibility, objectives and funding requirements and read in full before submitting a funding application.



Who is eligible for the Local Grants Fund?

Grants are designed to support a wide range of community groups, especially grassroots organisations and volunteer-led groups, in the seven Local Government Areas along the proposed route.



Your chance to help decide how grants are allocated

An **Independent Local Grants Review Panel** made up of community representatives will provide local insight and make recommendations so that grants reflect local priorities. Applications for Panel positions are now open and will close on 18 May 2026.



Sponsorship Program - \$1 million over four years if project is approved

The Sponsorship Program provides \$1 million over four years, of which \$250,000 is available upfront, regardless of whether the WRL project is approved. The remaining funding becomes available if the project proceeds. Sponsorships are available for events, activities and partnerships that build visibility and connection and where organisations are comfortable featuring the WRL brand with appropriate acknowledgement agreed in advance.

Applications for sponsorship will be accepted on a rolling basis until funds are allocated.



Funding tiers:



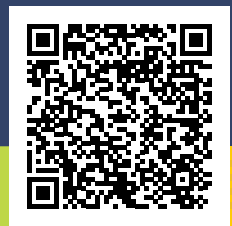
- **\$5,000 – Foundation**
- **\$20,000 – Momentum**
- **Legacy tier (\$15,000 a year for three years, available if the WRL project proceeds)**

Ready to explore funding opportunities and bring your community project ideas to life?

Scan for guidelines, eligibility and how to apply.

Contact us at grants@westernrenewableslink.com.au or call 1800 WRL WRL (975 975).

Applying for or receiving a grant does not indicate support for the WRL project and does not affect anyone's right to oppose it.



About the Western Renewables Link

The Western Renewables Link is a proposed new 190 kilometre overhead high-voltage electricity transmission line that will carry renewable energy from Bulgana in western Victoria to Sydenham in Melbourne's north-west. This critical infrastructure will unlock the renewable energy potential of western Victoria and support the state's transition to clean, reliable and affordable energy.

More information

Visit the project website westernrenewableslink.com.au for the latest project information.

Need assistance to contact us?



If you need an interpreter, please call 13 14 50.



If you are deaf and/or find hearing or speaking with people on the phone difficult, please contact the National Relay Service on voice relay number 1300 555 727, TTY number 133 677 or SMS relay number 0423 677 767.

Contact us

- 🌐 westernrenewableslink.com.au
- 📞 1800 WRL WRL (975 975)
- ✉️ info@westernrenewableslink.com.au

Delivered by

