

Community Consultation Group #27

Tuesday June 10



Delivered by
AusNet

COMMERCIAL IN CONFIDENCE



Key topics

01

Project update

AusNet

02

Underground presentation

03

Community benefit sharing

04

Questions



COMMERCIAL IN CONFIDENCE

BUSINESS USE ONLY



01

Project update



COMMERCIAL IN CONFIDENCE

WRL EES Process Steps



Proposed engagement approach

Weeks 1 - 8



Nine (9) proposed **public display locations** to exhibit EES documents during exhibition period



Online one-on-ones for landholders and the broader community

Weeks 1 - 3



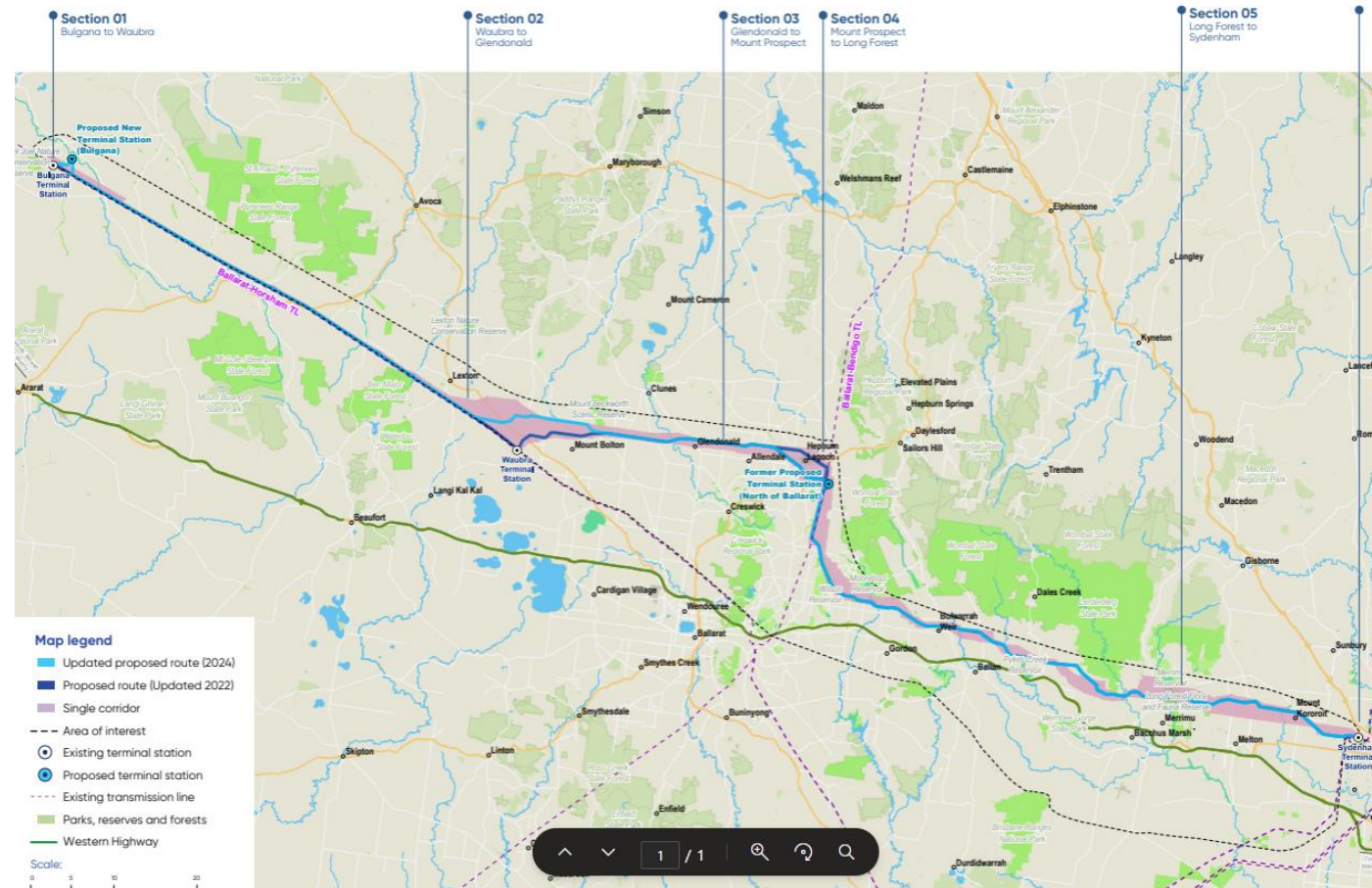
Six (6) 'navigating the EES' **pop-up sessions** along the proposed route

Weeks 4 - 7



Eight (8) **information sessions** with SME's and LLO's (landholder only and open community sessions)

Proposed route map with updates



COMMERCIAL IN CONFIDENCE

Section 01
Bulgana to Waubra

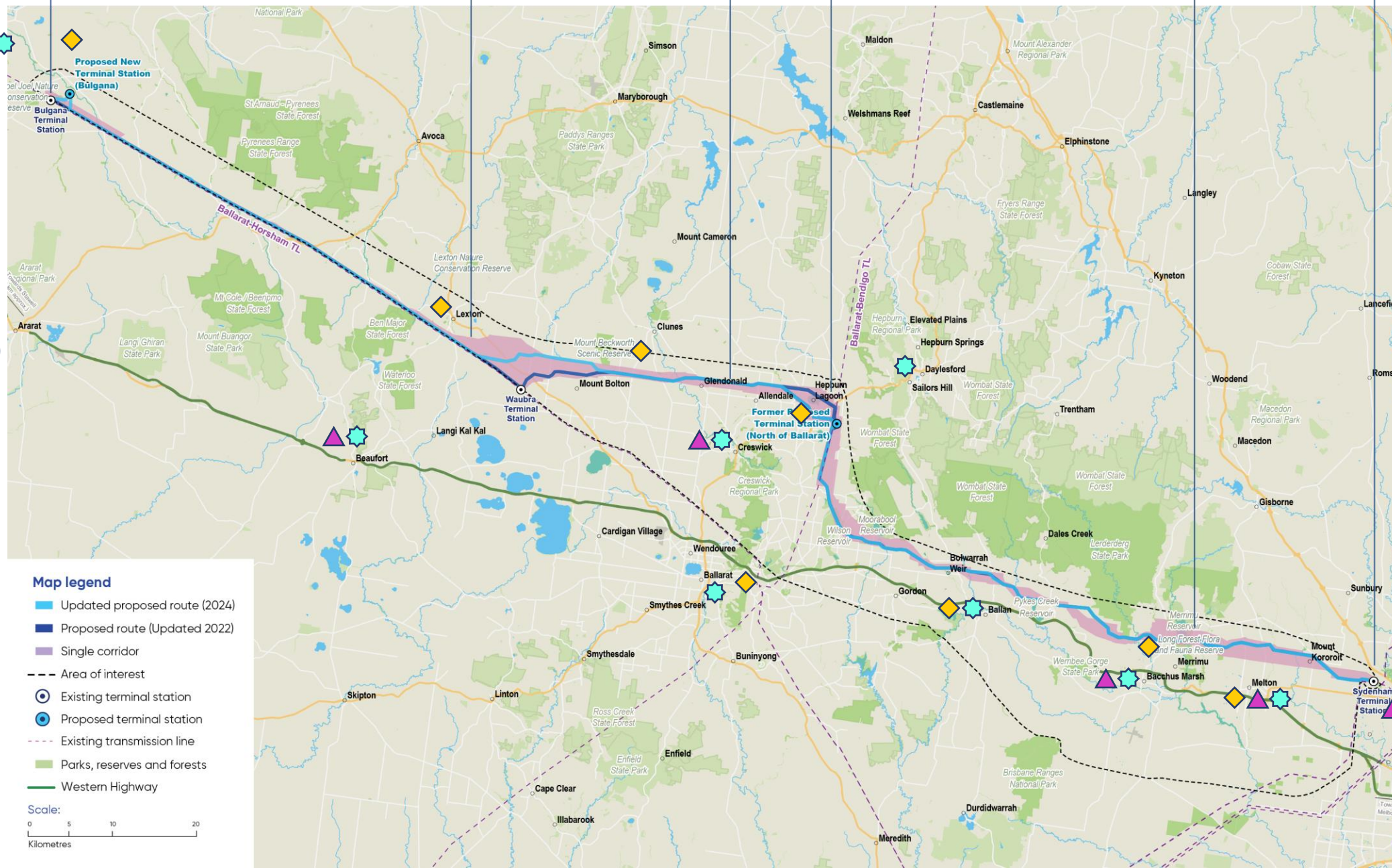
Section 02

Section 03
Glendonald to
Mount Prospect

Section 04
Mount Prospect
to Long Forest

Section 05
Long Forest to
Sydenham

- Information sessions (8)



WRL EES Chapters

Chapters

| Chapter | Topic |
|---------|---|
| | Summary Report |
| | Foreword |
| | Executive Summary |
| | Glossary and abbreviations |
| CH 1 | Introduction |
| CH 2 | Project Rationale |
| CH 3 | Legislative Framework and Approval Requirements |
| CH 4 | EES assessment framework and approach |
| CH 5 | Project development |
| CH 6 | Project description |
| CH 7 | Community and stakeholder engagement |
| CH 8 | Biodiversity and habitat |
| CH 9 | Aboriginal cultural heritage |
| CH 10 | Historic heritage |
| CH 11 | Landscape and visual |
| CH 12 | Land use and planning |
| CH 13 | Bushfire |

| Chapter | Topic |
|---------|--|
| CH 14 | Economic |
| CH 15 | Agriculture and forestry |
| CH 16 | Aviation |
| CH 17 | EMI and EMF |
| CH 18 | Air quality |
| CH 19 | Noise and vibration |
| CH 20 | Transport |
| CH 21 | Social |
| CH 22 | Geology and soils |
| CH 23 | Contaminated land |
| CH 24 | Groundwater |
| CH 25 | Surface water |
| CH 26 | Greenhouse gas |
| CH 27 | Matters of National Environmental Significance |
| CH 28 | Climate change |
| CH 29 | Environmental Management Framework |
| CH 30 | Conclusion |



WRL EES Technical Reports & Attachments

Technical Reports

| Technical Report | Applicable Chapter | Topic |
|------------------|--------------------|--|
| | | Technical Reports |
| A | CH8 | Biodiversity Impact Assessment |
| B | CH9 | Aboriginal Cultural Heritage Impact Assessment |
| C | CH10 | Historical Heritage Impact Assessment |
| D | CH11 | Landscape and Visual Impact Assessment |
| E | CH12 | Land Use and Planning Impact Assessment |
| F | CH21 | Social Impact Assessment |
| G | CH14 | Economic Impact Assessment |
| H | CH15 | Agriculture and Forestry Impact Assessment |
| I | CH18 | Air Quality Impact Assessment |
| J | CH16 | Aviation Impact Assessment |

| Technical Report | Applicable Chapter | Topic |
|------------------|--------------------|---------------------------------------|
| | | Technical Reports |
| K | CH13 | Bushfire Impact Assessment |
| L | CH17 | EMI and EMF Impact Assessment |
| M | CH26 | Greenhouse Gas Impact Assessment |
| N | CH28 | Climate Change Assessment |
| O | CH19 | Noise and Vibration Impact Assessment |
| P | CH20 | Transport Impact Assessment |
| Q | CH22 | Geology and Soils Impact Assessment |
| R | CH23 | Contaminated Land Impact Assessment |
| S | CH24 | Groundwater Impact Assessment |
| T | CH25 | Surface Water Impact Assessment |

Attachments

| Attachment Number | Applicable Chapter | Topic |
|-------------------|--------------------|--|
| | | Attachments |
| 1 | N/A | Project development and assessment of alternatives |
| 2 | N/A | Assessment of feasibility for an underground 500kV transmission line for Western Renewables Link |
| 3 | N/A | Draft Planning Scheme Amendment |

| Attachment Number | Applicable Chapter | Topic |
|-------------------|--------------------|--|
| | | Attachments |
| 4 | CH7 | Stakeholder and community engagement consultation report |
| 5 | N/A | Offset strategy |
| 6 | N/A | Map book |



Navigating the EES

How to navigate the EES process fact sheet and video

- EES process
- How to navigate the EES
- How to make a submission

INFORMATION SHEET



Navigating the EES

The Environment Effects Statement (EES) and the draft Planning Scheme Amendment for the Western Renewables Link are now open for public submissions. The EES includes information on how the project could affect the environment during construction and operation and how any adverse impacts would be managed.

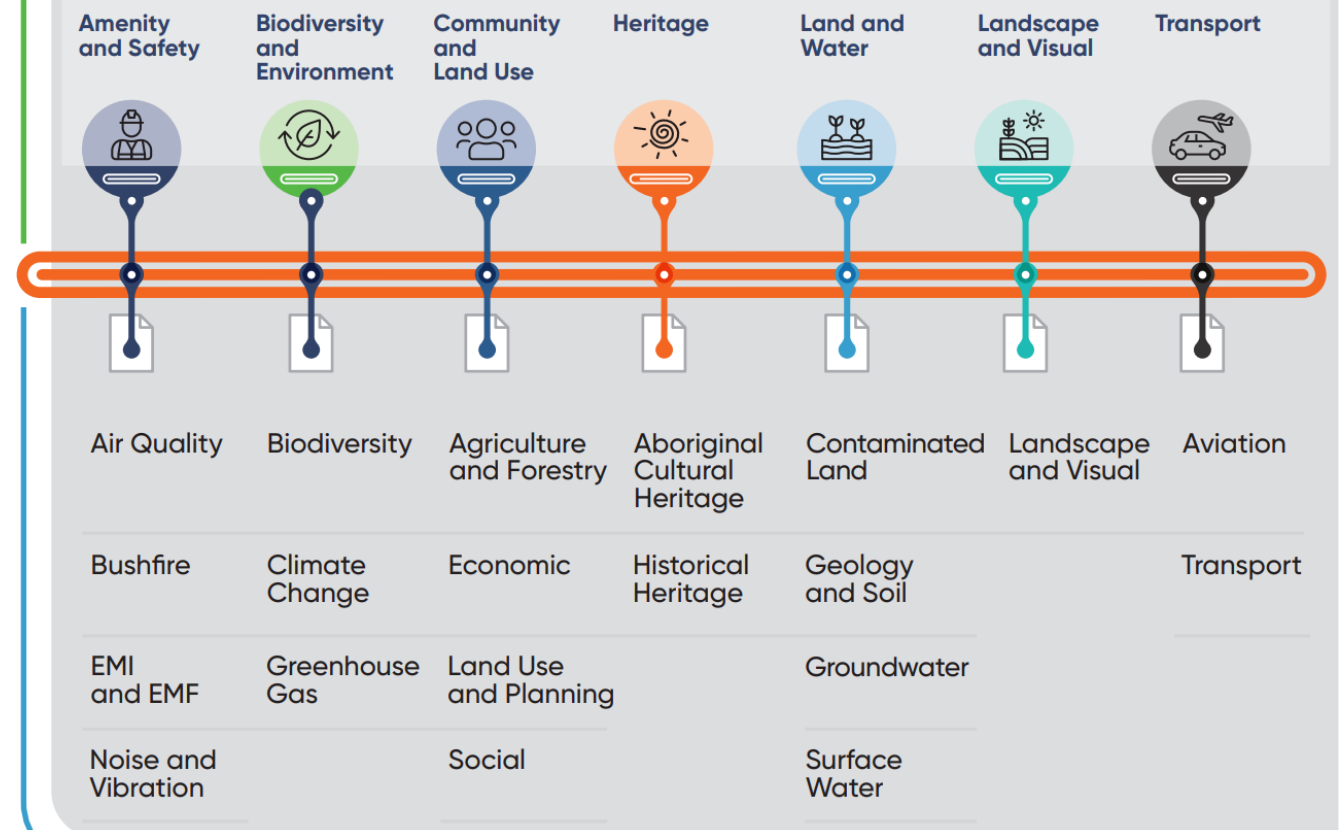
This fact sheet has been developed to help you navigate the Western Renewables Link EES and connect you with the information that matters to you.

It provides details on how potential environmental, social and economic impacts have been considered and where to find more information in the EES.

The Western Renewables Link (WRL) is a proposed 700km high-voltage overhead transmission line designed to transport renewable energy from western Victoria to Sydney in Melbourne's north-west for distribution across the State. Developed by AusNet Services, the project aims to alleviate congestion in the existing transmission network, enabling the delivery of clean energy to over one million homes and supporting Victoria's transition to sustainable energy sources.

Subject specific fact sheets to support navigation of the EES

- 7 x fact sheets



COMMERCIAL IN CONFIDENCE

BUSINESS USE ONLY



02

Technical Presentation



COMMERCIAL IN CONFIDENCE



03

Community Benefit Sharing



COMMERCIAL IN CONFIDENCE

Benefit sharing activation streams

There are multiple ways in which benefits will be shared through the delivery of WRL. The below five (5) streams are key focus areas for benefit sharing.

AusNet

VicGrid

**WRL Social
Value
Framework**

**WRL
Community
Benefit Fund**

**Significantly
Impacted
Neighbour
Payment
Scheme**

**Traditional
Owner Benefit
Sharing**

**VicGrid - REZ
Community
Benefits Plan**



Communities along the proposed route

There are 11 key issues identified that communities along the WRL route are currently facing

Leveraging previous analysis, State Government Regional Economic Development Strategies, Council plans, Council economic development strategies, and interviews with key stakeholders, we have identified 11 key issues the communities along the WRL route are facing.



Lack of affordable and temporary housing



Access to tertiary education



Telecommunications blackspots and accessibility



Energy poverty



Access to childcare



Access to healthcare



First Nations inequality and representation



Environmental support



Poor quality and out-of-date infrastructure



Regional economic development



Disaster support



Thank You

Western Renewables Link

PO Box 638
Ballarat
VIC 3353

T 1300 360 795
E info@westernrenewableslink.com.au
W westernrenewableslink.com.au

Delivered by

AusNet