

Western Victoria  
**transmission network project**



**FACT SHEET JUNE 2021**

# **Project overview**

Delivered by

*mondo*<sup>®</sup>



**[westvictnp.com.au](http://westvictnp.com.au)**



## **Project Overview**

The project is a critical upgrade of the state's transmission network which will help ensure Victoria's successful transition from coal generated energy to sustainable, affordable and reliable renewable energy. It will connect large scale wind and solar in the west into the grid to power more than half a million homes across Victoria.

The project includes a new transmission line starting at Bulgana, near Stawell in Victoria's west, and covering approximately 190km to Sydenham in Melbourne's north-west. The project will enable the connection of new renewable energy generated in western Victoria into the National Electricity Market and increase the Victorian transmission network capacity.

The project is being delivered by AusNet Services through its commercial division Mondo. AusNet Services currently operate 6,500kms of transmission lines across Victoria.



## Why is this project needed?

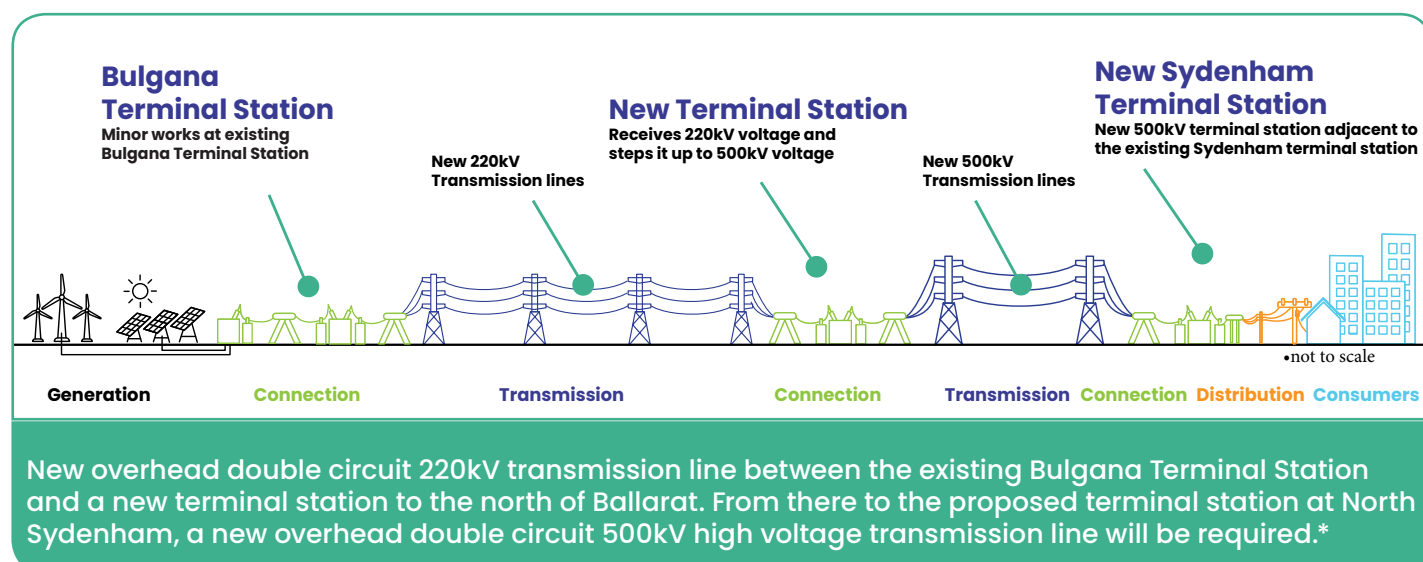
This transmission project is essential to connecting renewable energy projects to the grid. It will assist Victoria's transition to clean energy and reduce bills for business and households.

The project will provide more than 300 jobs in construction and significant economic benefits to communities along the route. Its purpose is to reduce urgent congestion on the existing transmission network, and unlock up to 900MW of new, clean electricity for Victorians.

The existing transmission network in western Victoria is at capacity. This means only limited power can be transported out of the region into the wider network, potentially impacting electricity prices for everyone over the long-term.

Renewable energy in the broader region of Western Victoria currently has a combined generation of approximately 4000MW connected and the potential for a further up to 9000MW. Unlocking these vast reserves and making them available to the national electricity market will play a key role in energy reliability and significantly contribute to putting downward pressure on energy prices.

Within the selected corridor we are investigating the following option:



\*As part of the Environment Effects Statement (EES), Ausnet Services is investigating the option to increase the amount of energy unlocked in Western Victoria, by changing the voltage of the 220kV section between Bulgana and Waubra to 500kV. It has been identified in the Renewable Energy Zone Development Plan Directions Paper and is being actively considered by the Victorian Government. Further information on the REZ priorities can be found at <https://tinyurl.com/azaxc4rf>

If this option is progressed for this project, the terminal station to be located to the north of Ballarat may not be required for this project.

# Engagement phases during the preparation of the EES

**Early  
2020**

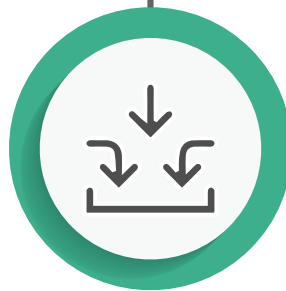
**Mid - Late  
2020**

**Late  
2020**



## Early stakeholder engagement

Stakeholder feedback has helped to shape the engagement and communications approach, including the projects understanding of issues and points of interest.



## Area of Interest engagement and EES referral lodged

Community and landowner input assists with identification of opportunities and constraints within the project area of interest, to inform decision-making on the potential project corridors.



## Exhibition of draft EES scoping requirements

Formal public comment informs the final Scoping Requirements on matters to be investigated and documented in the EES.

## Project timeline

Following consideration of community feedback, along with early investigations, we narrowed down the area of interest to multiple corridors in February 2021. Community engagement and technical investigations have continued since then. A single corridor, considered to be the least constrained corridor, was identified in June 2021. Full details are outlined in the transmission corridor fact sheet available on the website – [www.westvictnp.com.au](http://www.westvictnp.com.au).

We will progress this corridor (refer to map) through the Environment Effects Statement (EES). Following further assessments, we expect that a final proposed route will be announced in late 2021. Further consultation will be undertaken on this route. The route will not be finalised until the Planning Minister's assessment is received and any matters raised by the Minister are addressed.



**Mid 2020  
Late 2022**

**Mid  
2022**



**EES preparation,  
specialist studies,  
CHMPs\* and ongoing  
engagement**

Ongoing community feedback will assist in the:

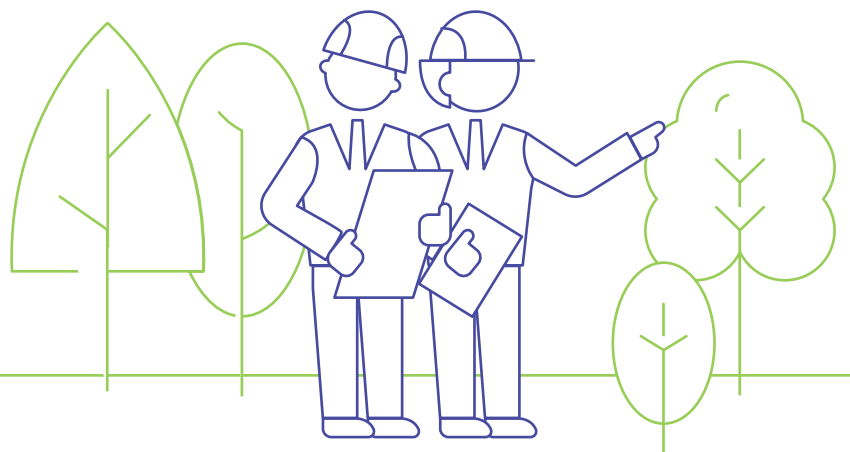
- Identification of existing values and matters to be considered in environmental, cultural and social studies.
- Development of appropriate and effective measures to avoid and minimise impact and risks.
- Identification of opportunities to maximise benefits.
- Development of a design.

\*Cultural Heritage Management Plans (CHMPs)



**Submission of  
EES to DELWP**

Draft EES document and supporting studies submitted to DELWP for review.



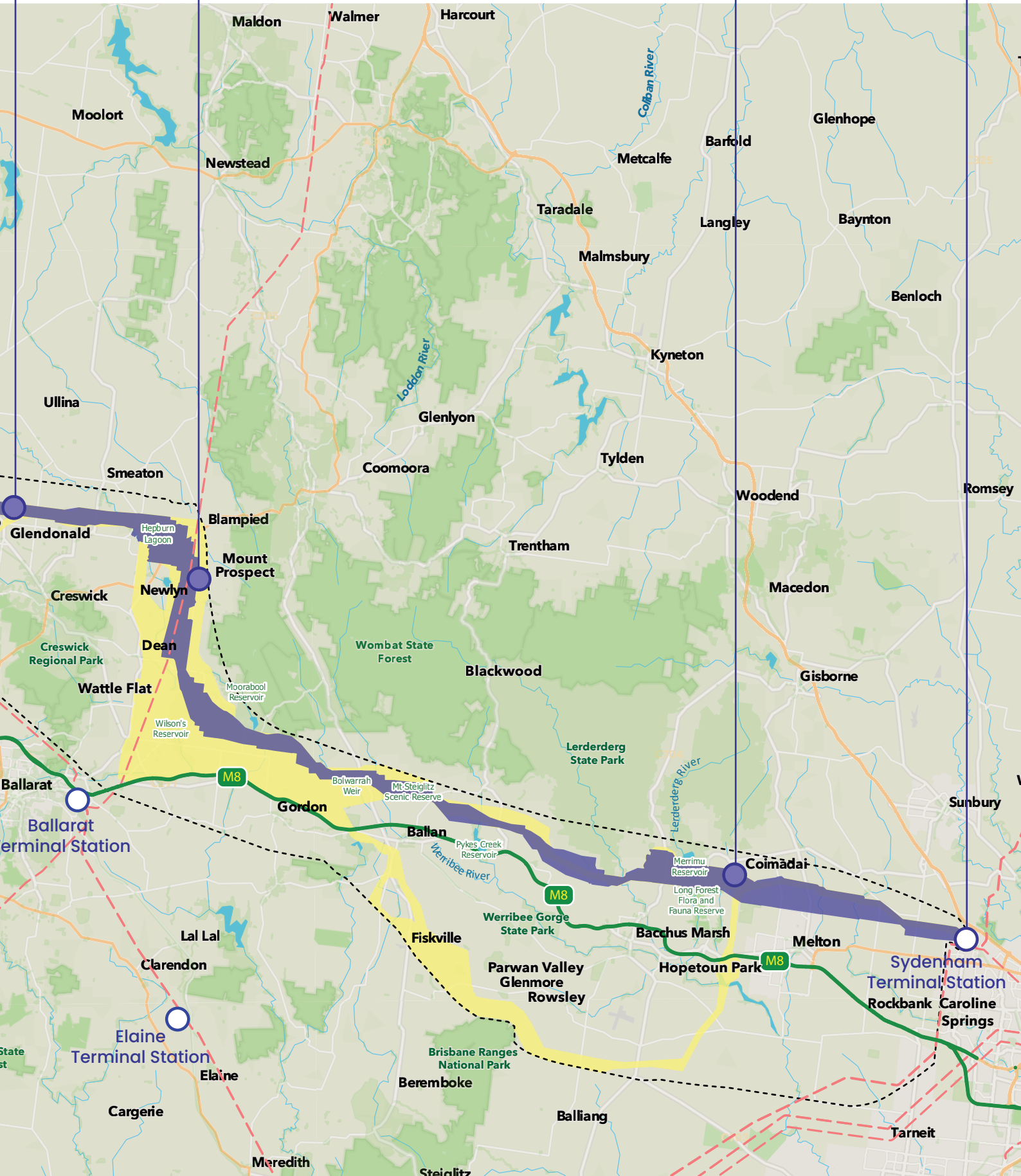
# Single corridor – Area of Interest



**Section 03**  
Glendonald to  
Mount Prospect

**Section 04**  
Mount Prospect to  
Long Forest

**Section 05**  
Long Forest to  
Sydenham





### Stay informed

If you need further information or clarification about the project in general, please call 1300 360 795 or email [info@westvictnp.com.au](mailto:info@westvictnp.com.au). To register for updates, visit [westvictnp.com.au](http://westvictnp.com.au).