

Updated proposed route north of Waubra

With input from landholders and guidance from technical specialists we have identified a new proposed route to the north of Waubra

Project overview

The Western Renewables Link is a proposed 500kV double circuit overhead electricity transmission line from near Bulgana in western Victoria to Sydenham in Melbourne's north-west. As we transition from coal, a new transmission line is required to transport renewable energy from wind and solar farms in western Victoria, a key renewable energy zone, to homes and businesses across the state and into the National Electricity Market.

Planning and approvals

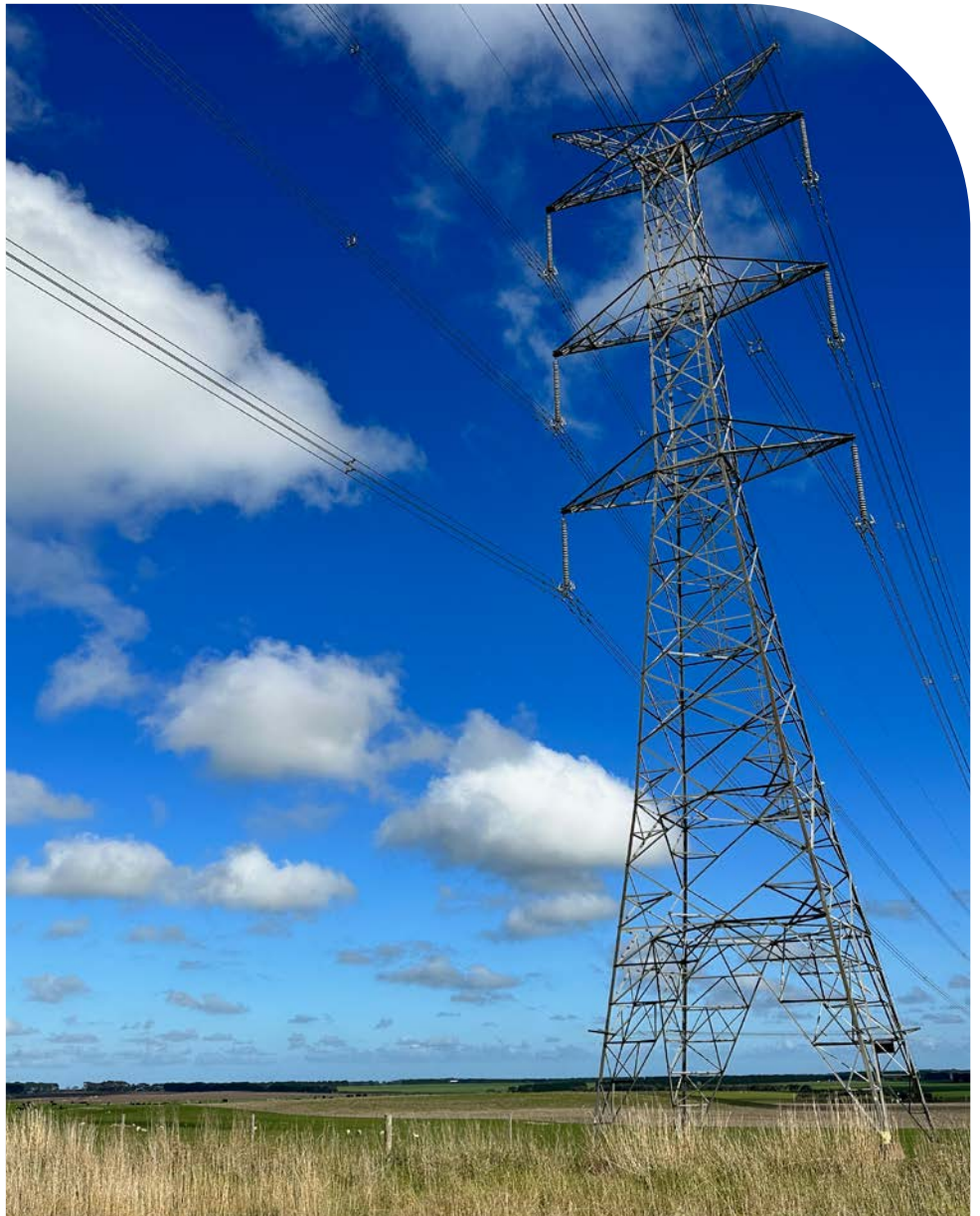
The Victorian Minister for Planning has determined that an Environment Effects Statement is required for the Western Renewables Link project. We are working toward the Environment Effects Statement public exhibition and panel inquiry, which includes a public hearing, taking place throughout 2025.

You can find the latest project information on the [project website](#).

Acknowledgement of Traditional Owners

AusNet acknowledges the Traditional Owners of the lands on which the proposed Western Renewables Link will operate, and pays respect to their Elders past, present and emerging. We recognise the role of each Registered Aboriginal Party and Traditional Owners in the management, protection, and promotion of cultural heritage, connection to Country, cultural awareness and land access.

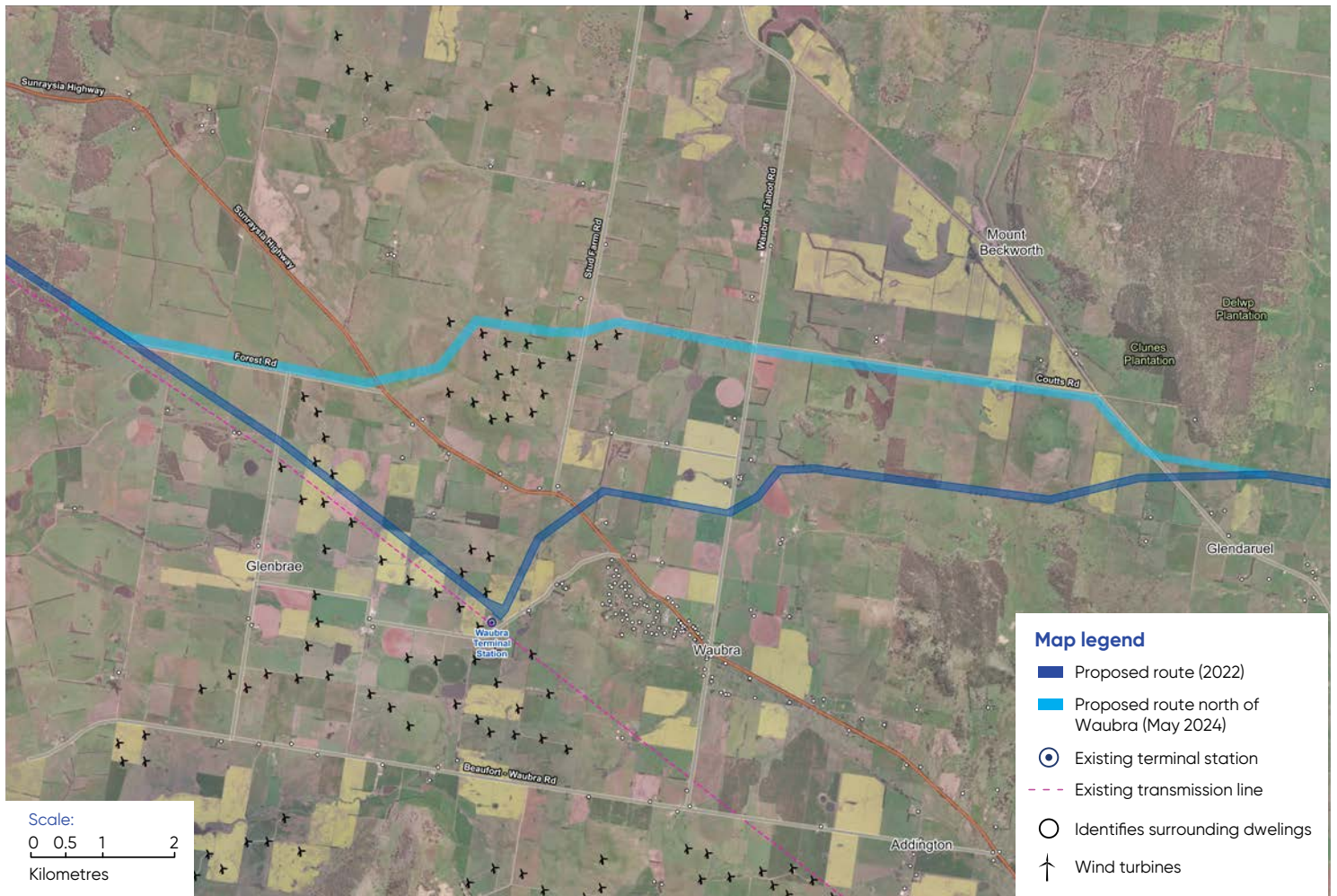
We will continue to work in partnership with First Peoples - State Relations Victoria and the recognised Registered Aboriginal Parties of the Barengi Gadjin, Eastern Maar, Djaara (Dja Dja Wurrung), Wadawurrung and Wurundjeri Woi Wurrung Traditional Owners Corporations, to deliver the project.



Delivered by

AusNet

North of Waubra



Why has this update been made?

Changes to the project in 2023, including the increase in capacity of the 220kV section to 500kV, mean the transmission line will no longer connect into the existing Waubra Terminal Station. We have been working directly with landholders to the north of Waubra since these changes were made to find a new proposed route in this area. We have also undertaken field surveys and investigations to inform the new proposed route.

What has changed?

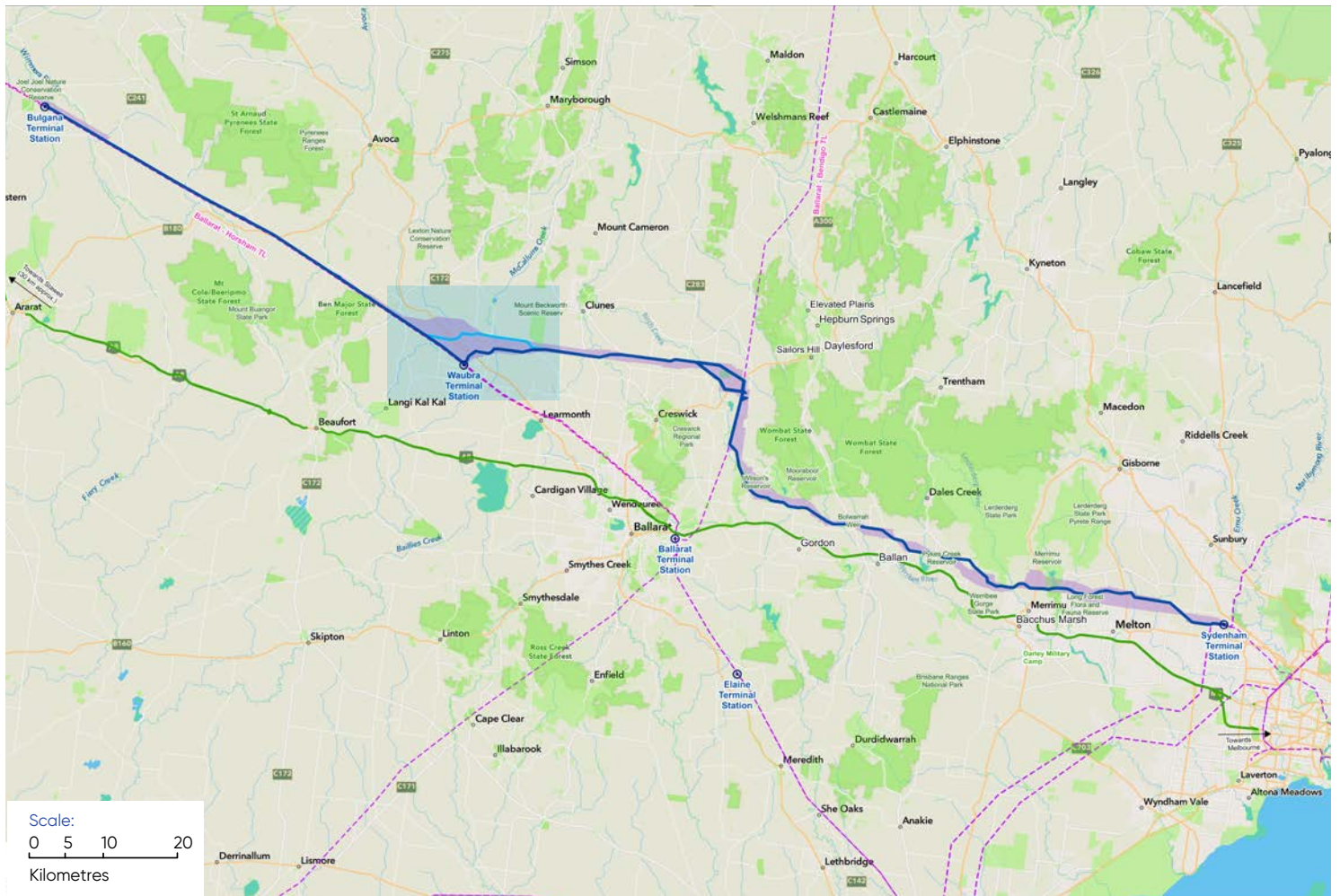
Rather than following the existing 220kV transmission line and connecting into the existing Waubra Terminal Station as previously proposed, the proposed route now runs to the north of the existing Waubra Terminal Station. The new proposed route departs from the existing 220kV transmission line at Forest Road, running east, then turns north-east across the Sunraysia Highway. Then runs through the Waubra wind farm, turning east to follow Gallaghers Road and Coutts Road to Coghills Creek Road, which it follows south-east to join the existing proposed route at the north of Glendaruel.

How has feedback been considered?

Through working with landholders and technical specialists we have identified and balanced many complexities in this area. Key considerations include houses, agricultural land use, Waubra wind farm, the natural landscape including Mount Beckworth, Mount Bolton and Mount Ercildoun, volcanic cones which are recognised places of Aboriginal cultural heritage significance, and native vegetation and habitat.

We have also worked directly with landholders to understand and respond to their operational and lifestyle requirements, business, farming and property specific issues and concerns.

Proposed route



Other changes

We are continuing to listen to landholder and community feedback on the proposed route, and making updates to the proposed route, tower and access track locations in response to their input and technical specialist advice.

Due to the increase in capacity of the 220kV section of the proposed transmission line between Bulgana and north of Ballarat to 500kV, the terminal station proposed to the north of Ballarat is no longer required. Instead, new terminal station works will be required near the existing Bulgana Terminal Station. While we have progressed designs and planning for these terminal station works, the exact location of the works is not yet finalised. We will provide an update to landholders and communities once this information is available.

As confirmed in September 2023, the option to the south of Hepburn Lagoon has been selected as the proposed route for the Western Renewables Link. This decision was based on what we currently know about the visual impacts, biodiversity, residences, land use, historic heritage, social and Aboriginal cultural heritage impacts in this area. We are working with landholders around Hepburn Lagoon to undertake field surveys to further inform project design and planning and will provide an update to landholders and communities when more information is available.

Contact us

You can contact the project team via email at info@westernrenewableslink.com.au or phone 1800 WRL WRL (975 975).

All landholders on the Western Renewables Link proposed route, have a designated Land Liaison Officer who is their primary point of contact for the project. Landholders can contact their Land Liaison Officer via direct email or mobile. Please contact the project team via the details above to confirm the contact details of your Land Liaison Officer.



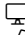


More information

A detailed interactive map showing the proposed route (and previous iterations) is available on the [project website](#). The map can be searched by address and you can zoom in to view the proposed route on individual land parcels.

More information about the development of the proposed route is provided in the [Proposed Route Overview \(November 2021\)](#) and [Updated Proposed Route Overview \(August 2022\)](#), available on the Western Renewables Link website, [resources page](#).



Western Renewables Link

 www.westernrenewableslink.com.au
 1800 WRL WRL (975 975)
 info@westernrenewableslink.com.au

Ballarat PO Box
PO Box 638, Ballarat VIC 3353

Contact details for your Land Liaison Officer can be provided by the project team via the contact details above.

Information straight to your inbox

Sign up for information straight to your inbox at the project website www.westernrenewableslink.com.au.

Feedback

You can provide feedback on this document via our website www.westernrenewableslink.com.au or by calling 1800 WRL WRL (975 975) or by emailing info@westernrenewableslink.com.au.

Translation and interpretation services





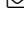
If you need an interpreter, please call 13 14 50.



If you are deaf and/or find hearing or speaking with people on the phone difficult, please contact the National Relay Service on voice relay number 1300 555 727, TTY number 133 677 or SMS relay number 0423 677 767.

Complaints

If you have a query, a compliment or a complaint, you can let us know by using the online enquiry form on www.westernrenewableslink.com.au. Or you can let us know by:

 1800 WRL WRL (975 975)
 info@westernrenewableslink.com.au
 PO Box 638, Ballarat VIC 3353

You can also lodge a complaint or provide feedback directly to your Land Liaison Officer.

Complaint handling steps:

1. You can lodge a complaint with AusNet as outlined above.
2. We will acknowledge receipt of a complaint in writing and will provide a unique complaint reference number within two working days.
3. We aim to resolve the complaint within ten working days.
4. Where we cannot reach a resolution within ten working days, we will keep you informed of the progress being made with handling the complaint and provide a revised timeframe for resolving the complaint.
5. At any time, you may request to have your complaint escalated to the senior management team by sending an email to GeneralManager@westernrenewableslink.com.au

If your complaint or question relates to the RIT-T process, you can raise it with AEMO by emailing WestVicRITT@aemo.com.au.

If your complaint or question relates to the Environment Effects Statement process, you can raise it with the Department of Transport and Planning by emailing environment.assessment@delwp.vic.gov.au.

If you are not satisfied with the outcome after you have made a complaint to the project team, you may pursue dispute resolution through the Energy and Water Ombudsman Victoria if the complaint relates to access or proposed access to private land under section 93 (1) of the *Electricity Industry Act 2000 (Vic)*, and/or compliance with the Essential Services Commission Land Access Code of Practice.

Other sources of information

Australian Energy Infrastructure Commissioner (www.aeic.gov.au) including information about how to make a complaint, best industry practice and resources for landholders.

Australian Energy Market Operator

(www.aemo.com.au) including information on the Regulatory Investment Test for Transmission (RIT-T) process for this project.

Energy and Water Ombudsman Victoria

(www.ewov.com.au) including information about complaints and dispute resolution.

Energy Safe Victoria

(www.esv.vic.gov.au) including information about the safe design and operation of high voltage transmission networks in Victoria.

Environment Effects Statement Process in Victoria

(www.planning.vic.gov.au/environmental-assessments/environmental-assessment-guides/environment-effects-statements-in-victoria) including information about the environment assessment process managed by the Department of Transport and Planning.

Essential Services Commission

(www.esc.vic.gov.au) including information about the regulation of transmission licenses in Victoria and the Electricity Transmission Company Land Access Code of Practice.

Valuer General of Victoria



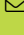
(www.land.vic.gov.au/valuations/first-time-here/about-valuer-general-victoria) including general information about how land is valued in Victoria.

The information in this document is for reference only – it is not designed to be, nor should it be regarded, as professional or legal advice. You should seek appropriate independent professional and/or legal advice where appropriate and before making any decisions based on material in this document. The information is an overview (in summary form) and does not purport to be complete. This document, and the information in this document, will not form the basis of any contract or commitment. AusNet Services does not guarantee or warrant the accuracy, completeness, or currency of the information provided and AusNet Services, its directors, officers, employees, agents and advisers disclaim all liability and responsibility (including for negligence) for any direct or indirect loss or damage which may be suffered by any recipient through use or reliance on anything contained in or omitted from this document.

More information

Visit the project website westernrenewableslink.com.au for the latest project information.

Contact us

 westernrenewableslink.com.au
 1800 WRL WRL (975 975)
 info@westernrenewableslink.com.au

Delivered by

AusNet